

Powerpole® connectors provide cost-effective reliability, design flexibility and safety for your products' manufacture, installation and maintenance. Powerpoles are stackable and color-coded for easy customization into multipole blocks.

The housings are modular and genderless. Powerpole® connectors provide 600 Volts continuous, AC or DC operation. Wire sizes range from #1/0 to #10 AWG (53.5 to 5.3 mm²).

FEATURES

- **Flat wiping contact system**

Minimal contact resistance at high current, wiping action cleans contact surface during connection/disconnection

- **Colored modular housings**

Provides visual identification of proper mating connector

- **Molded-in dovetails**

Secures individual connectors into "keyed" assemblies which prevents misconnection with similar configurations



PRODUCT SPECIFICATIONS

Connector Model	PP180	Connector Model	PP180
UL Current Rating (Amperes)*	180*	Life	
UL Voltage Ratings (Volts)**	600*	a. No load (Contact/Disconnect Cycles)	To 10,000
Contact Barrel Wire Size (AWG)	1/0 to #10	b. Under Load (Hot Plug 250 cycles @ 120V)	75A
(mm ²)	53.5 to 5.3	Avg. Connection/Disconnect (lbs)	20
Maximum Wire Insulation Diameter (inches)	0.900	Operating Temperature Range °C***	-20° to 105°
(mm)	22.86	°F	-4° to 221°
AVG Contact Resistance* (micro-ohms)	100	Flammability Rating of Housing Material	UL94 V-0
Insulation Withstanding Test Voltage (Volts AC/DC)	2200		
Contact Retention Force (lbs)	170		

* UL Rated for 65°C rated wire or cable size
** Both AC & DC Voltage
*** Contact factory for higher temperature rated connectors

ORDERING INFORMATION

Housing & 180 amp Contact

Part Number	Housing Color	Wire AWG	Wire sq. mm
1380	Blue	1/0	53.5
1380G1	Black	1/0	53.5
1328G2	White	1/0	53.5
1380G3	Red	1/0	53.5
1380G4	Green	1/0	53.5

180 amp Contacts

Part Number	Description	Wire AWG	Wire sq. mm
1347	Individual, low detent	#1	42.4
1348*	Individual, low detent	#6	13.3
1382	Individual, low detent	1/0	53.5
1383	Individual, low detent	#2	33.6
1384	Individual, low detent	#4	21.2
180BBS	Bus bar 180 amp	NA	NA

* thin wall contact

Housings Only

Part Number	Description
1381	Blue housing
1381G1	Black housing
1381G2	White housing
1381G3	Red housing
1381G4	Green housing

Bushings

Part Number	Description	Wire AWG	Wire sq. mm
5648	Use with 1382	1/0 to #10	53.5/5.1
5663	Use with 1382	1/0 to #6	53.5/13.3
5687	Use with 1382	1/0 to #1	53.5/42.4
5690	Use with 1382	1/0 to #2	53.5/33.6
5693	Use with 1382	1/0 to #4	53.5/21.2

Accessories

Part Number	Description
110G18	Retaining Pins, 2 high block of connectors
110G19	Retaining Pins, 1 high block of connectors
110G20	Retaining Pins, 2 high block of connectors
10G56	Keeps nut for use with Bus bar contact

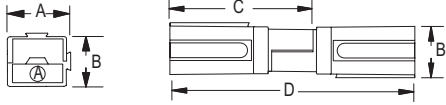
Tooling

Part Number	Description
1368	Hydraulic tool
1387G1	Pneumatic tool, #10 to 1/0
1388G3	- die for #10 to 1/0
1388G5	- die for #4 (1382 contact)
1389G3	- locator for #10 to 1/0
1389G5	- locator for #4 (1382 contact)

DIMENSIONS

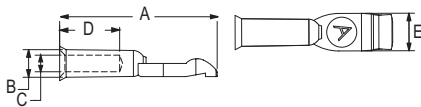
Powerpole® Housing

Series	-A-		-B-		-C-		-D-	
	mm	in.	mm	in.	mm	in.	mm	in.
PP180	28.6	1.13	28.6	1.13	82.6	3.25	139.7	5.50



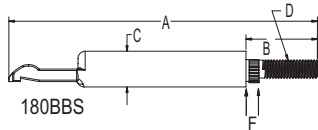
Contacts

Part Number	-A-		-B-		-C-		-D-		-E-		-F-	
	mm	in.	mm	in.	mm	in.	mm	in.	mm	in.	mm	in.
1347	53.35	2.1	12.95	.51	9.9	.39	26.42	1.04	12.7	.5	N/A	N/A
1348	59.7	2.35	9.4	.37	5.6	.22	.32	.82	12.7	.5	N/A	N/A
1382	59.7	2.35	12.95	.51	11.2	.44	27.18	1.07	12.7	.5	N/A	N/A
1383	59.7	2.35	12.95	.51	8.9	.35	26.42	1.04	12.7	.5	N/A	N/A
1384	59.7	2.35	12.95	.51	7.6	.3	26.42	1.04	12.7	.5	N/A	N/A
180BBS	109.7	4.3	25.4	1.0	12.7	.50	N/A	1/4-20	N/A	N/A	4.6	.18



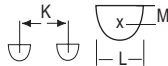
Powerpole®

Bus bar



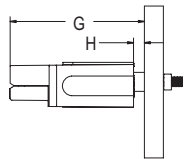
Bus bar Layout

Series	-K-		-L-		-M-	
	mm	in.	mm	in.	mm	in.
PP180	28.6	1.13	9.5	.38	3.4	0.14



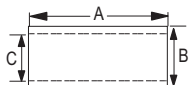
Bus bar Mounting Table

Series	-G-		-H-	
	mm	in.	mm	in.
PP180	89.8	3.5 ref	3.9	.2 ref

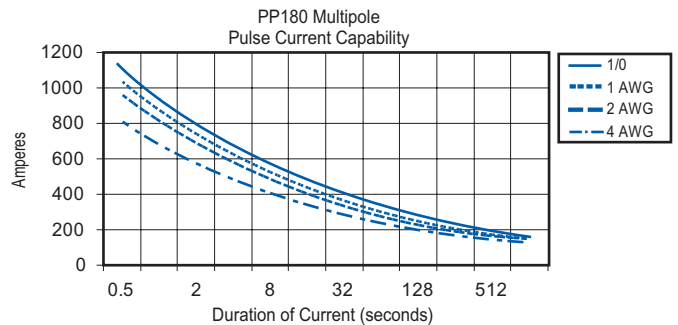
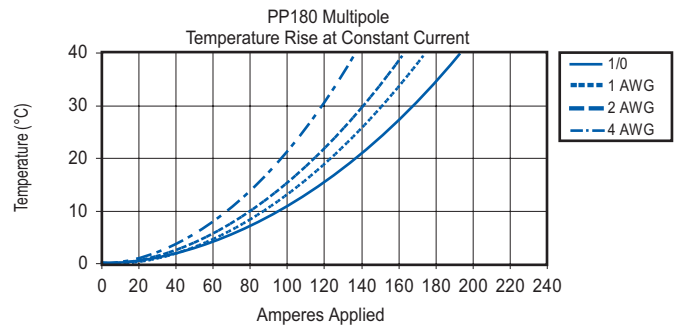
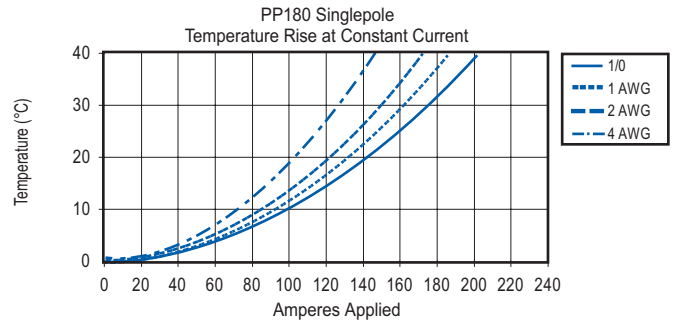


Bushings - (for use with 1382 contact)

Part Number	Reduces From	-A-		-B-		-C-	
		mm	in.	mm	in.	mm	in.
5648	1/0 to #10 AWG	25.4	1.0	10.85	.427	4.75	.188
5663	1/0 to #6 AWG	25.4	1.0	10.85	.427	5.55	.218
5687	1/0 to #1 AWG	25.4	1.0	10.85	.427	9.9	.39
5690	1/0 to #2 AWG	25.4	1.0	10.85	.427	8.7	.343
5693	1/0 to #4 AWG	25.4	1.0	10.85	.427	6.9	.287



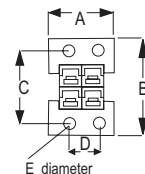
TEMPERATURE RISE CHARTS



Mounting Clamps

Part Number	-A-		-B-		-C-		-D-	
	mm	in.	mm	in.	mm	in.	mm	in.
1465G1	71.4	2.81	55.7	2.19	43.0	1.69	28.6	1.13
1465G1	71.4	2.81	84.4	3.32	71.7	2.82	28.6	1.13
1465G2	100.8	3.97	55.7	2.19	43.0	1.69	57.2	2.25
1465G2	100.8	3.97	84.4	3.32	71.7	2.82	57.2	2.25

Part Number	-E-		Number of Poles
	mm	in.	
1465G1	4.8	0.19	(2 Pole)
1465G1	4.8	0.19	(4 Pole)
1465G2	4.8	0.19	(3 Pole)
1465G2	4.8	0.19	(6 Pole)



All Data Subject To Change Without Notice

DS-PP180 REV02